



TK International
020 7794 8700
www.t-k.co.uk

Residential Sales
Residential Lettings
Property Management

Sales Office:
9 Heath Street
Hampstead
London NW3 6TP
E: sales@t-k.co.uk

Lettings Office:
16-18 Heath Street
Hampstead
London NW3 6TE
E: lettings@t-k.co.uk

tk.international
TK International
TK International

Est.
1998



Maresfield Gardens Hampstead NW3

A beautifully refurbished three bedroom, two bathroom apartment designed to a high specification.

This apartment offers oak wood flooring throughout, a modern fully fitted open plan kitchen reception with all integrated appliances, under floor heating and direct access to private patio and lawned rear garden. Also comprising master bedroom with new en-suite bathroom, excellent built in storage, two further bedrooms, family bathroom and off street parking for one car.

Set in a superb location close to all the local amenities of both Finchley Road and Swiss Cottage (Jubilee & Metropolitan Line).

£6,000 Per Month

SOLE AGENT











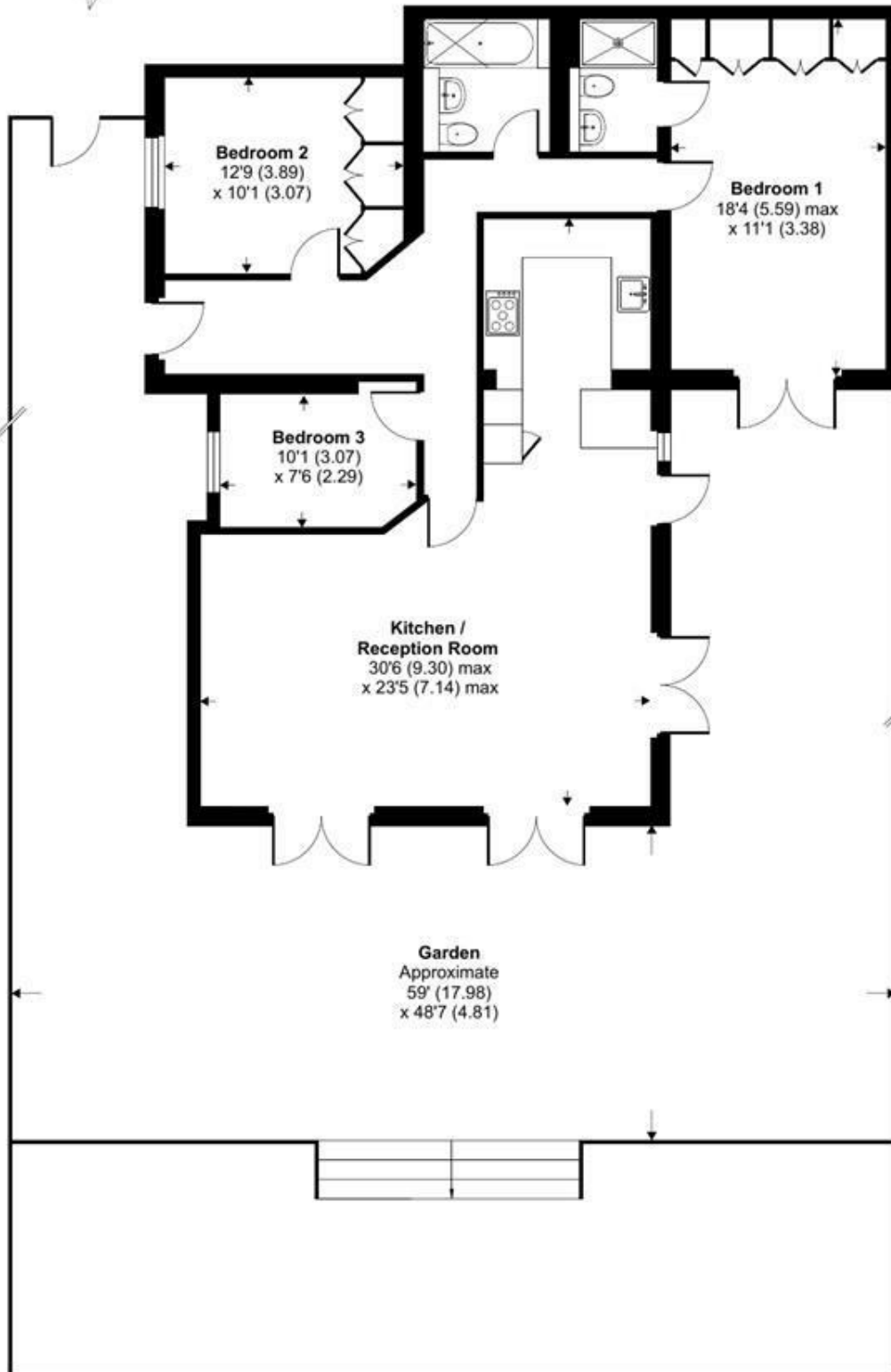




Maresfield Gardens, London, NW3

Approximate Area = 1136 sq ft / 105.5 sq m

For identification only - Not to scale



LOWER GROUND FLOOR



Floor plan produced in accordance with RICS Property Measurement Standards incorporating International Property Measurement Standards (IPMS2 Residential). © nichecom 2023.
Produced for TK (Hampstead) Ltd. REF: 1017296